

Marine weather and Baltic Sea

Warnings

Rain and cloudiness

Precipitation in Finland - BETA

Precipitation Nordic countries

Clouds Nordic countries

Clouds Europe

Space weather

Mobile weather and service numbers

Unit converter

Precipitation in Finland

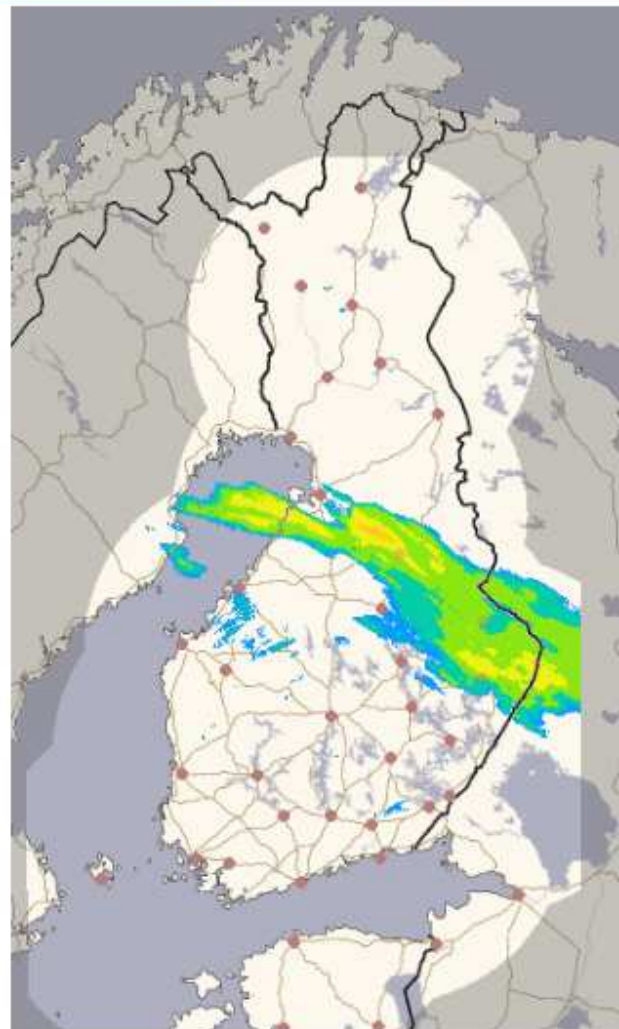
Finland 1 h + forecast

Finland 15 min.

Southern part 15 min.

Middle part 15 min.

Northern part 15 min.



Forecast updated 3/2 12:28 PM local time.

Observations

Fri 3/2 02:00 AM

Fri 3/2 03:00 AM

Fri 3/2 04:00 AM

Fri 3/2 05:00 AM

Fri 3/2 06:00 AM

Fri 3/2 07:00 AM

Fri 3/2 08:00 AM

Fri 3/2 09:00 AM

Fri 3/2 10:00 AM

Fri 3/2 11:00 AM

Fri 3/2 12:00 PM

Fri 3/2 01:00 PM

Forecasts

Fri 3/2 02:00 PM

Fri 3/2 03:00 PM

Fri 3/2 04:00 PM

Fri 3/2 05:00 PM

Fri 3/2 06:00 PM

Fri 3/2 07:00 PM

Fri 3/2 08:00 PM

Fri 3/2 09:00 PM

[Play](#)

Finland 1 h: The image displays precipitation in Finland. Under title "Observations" maps show the hourly accumulated precipitation as measured by the weather radars. Under title "Forecasts" maps are drawn by the meteorologist in duty, using latest information from radars and numerical weather prediction models.

Local weather

Marine weather and Baltic Sea

Warnings

Rain and cloudiness

Precipitation in Finland - BETA

Precipitation Nordic countries

Clouds Nordic countries

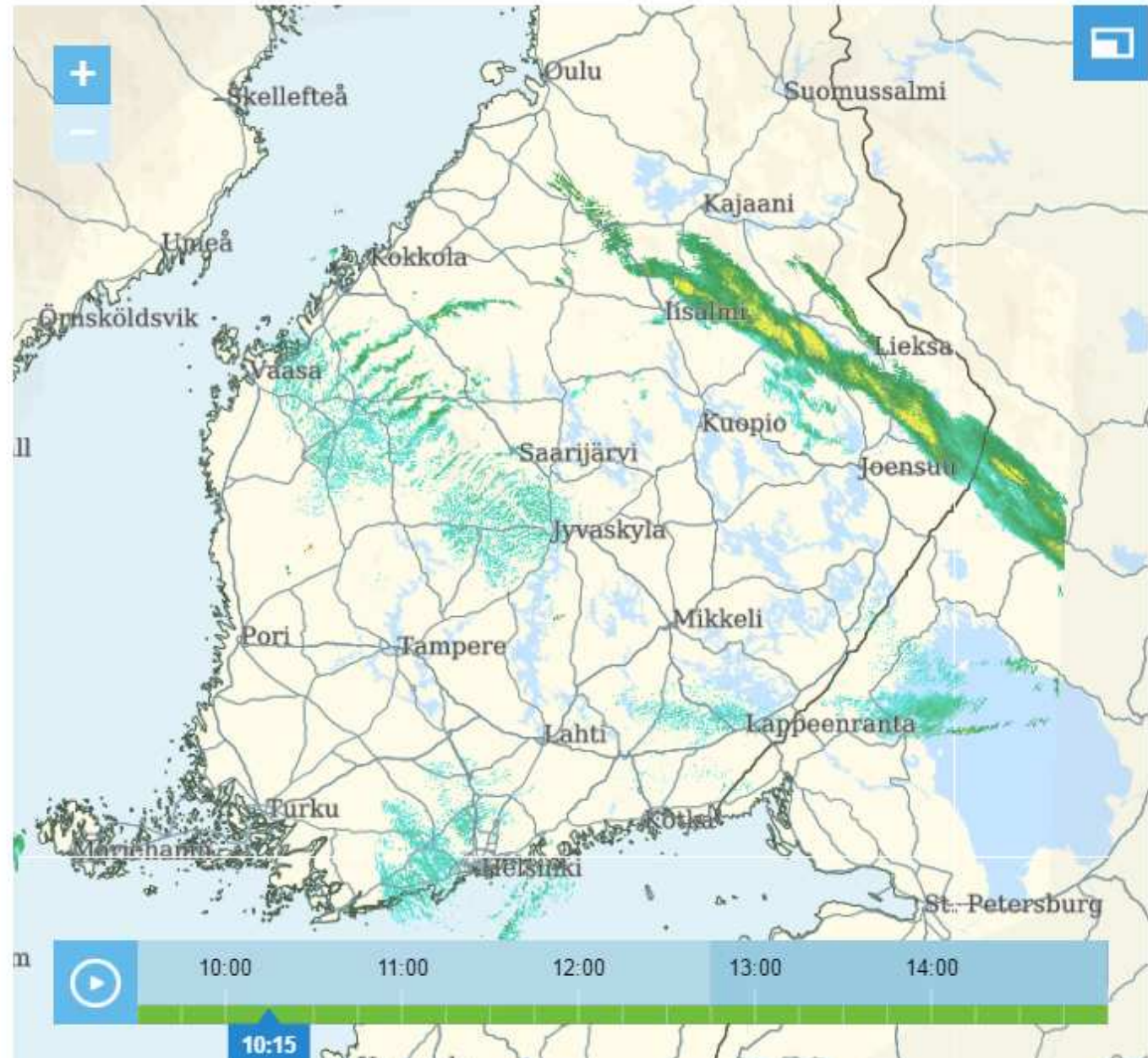
Clouds Europe

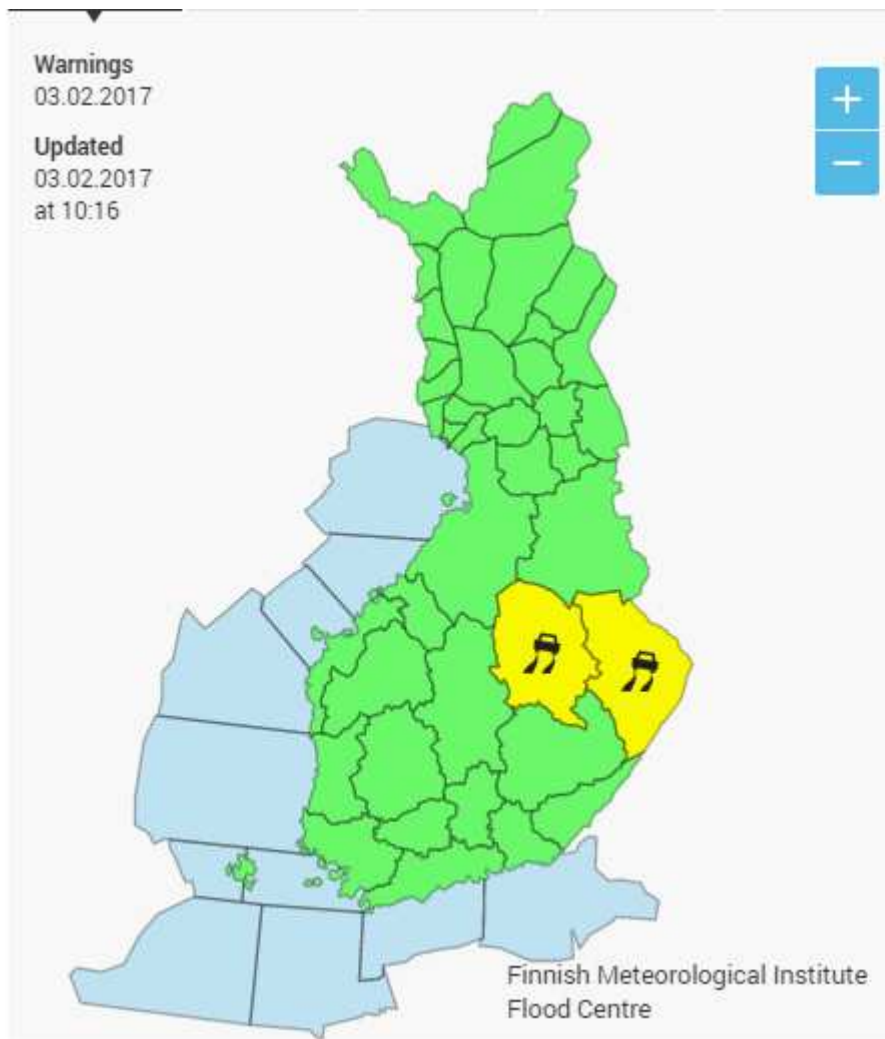
Space weather

Mobile weather and service numbers

Unit converter

Precipitation in Finland - BETA





Warnings about rains causing flooding

Warnings about heavy rains pertain to rains of both short and long duration. Heavy rains causing flooding occur in Finland mainly from spring to autumn.

The heaviest rains are usually recorded in late summer, when local 24-hour precipitation readings can exceed 100 millimetres.

Separate warnings can be given for heavy rains of long duration and for downpours of short duration. However, short-duration rains are associated with quickly developing thunder clouds that are more difficult to predict than extensive rain areas.

Rain warnings use three warning limits:

- ▶ **Warning about heavy rain of long duration: warning limits:**
 - ▶ 50 (yellow),
 - ▶ 70 (orange) and
 - ▶ 120 (red) millimetres per 24 hours
- ▶ **Warning about a downpour of short duration: warning limits:**
 - ▶ 20 (yellow),
 - ▶ 30 (orange) and
 - ▶ 45 (red) millimetres per hour.

Warnings on heavy rains (yellow and orange warning limits) are also issued as much as three days in advance.